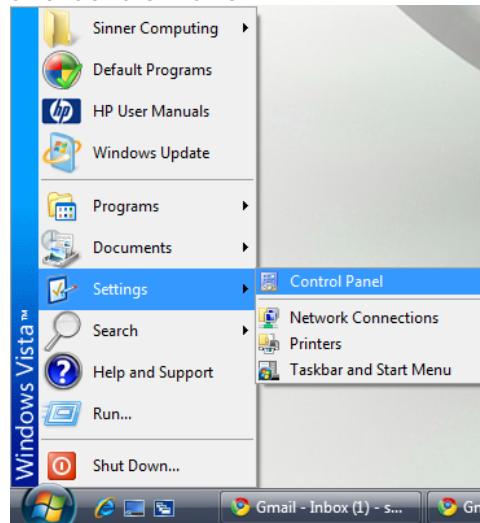
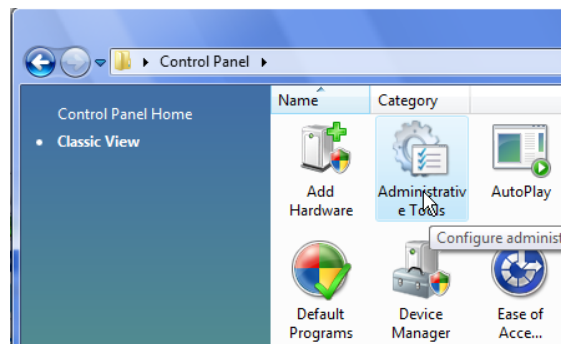


6. How to create DSN?

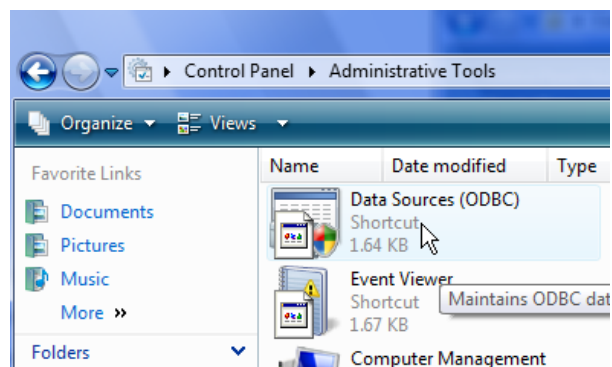
- Click on Start and Control Panel



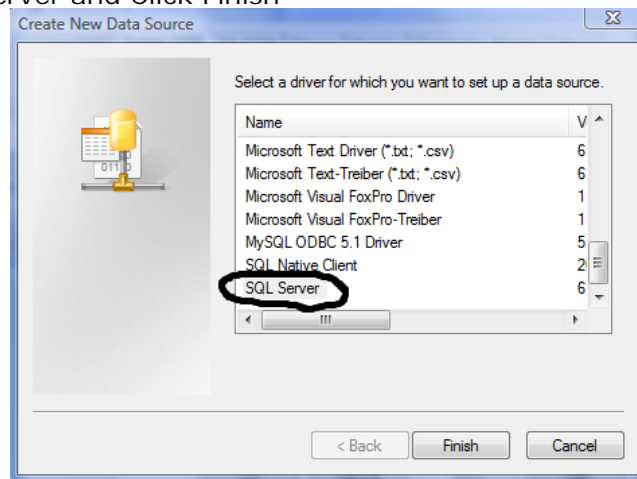
- Click on Administrative Tools



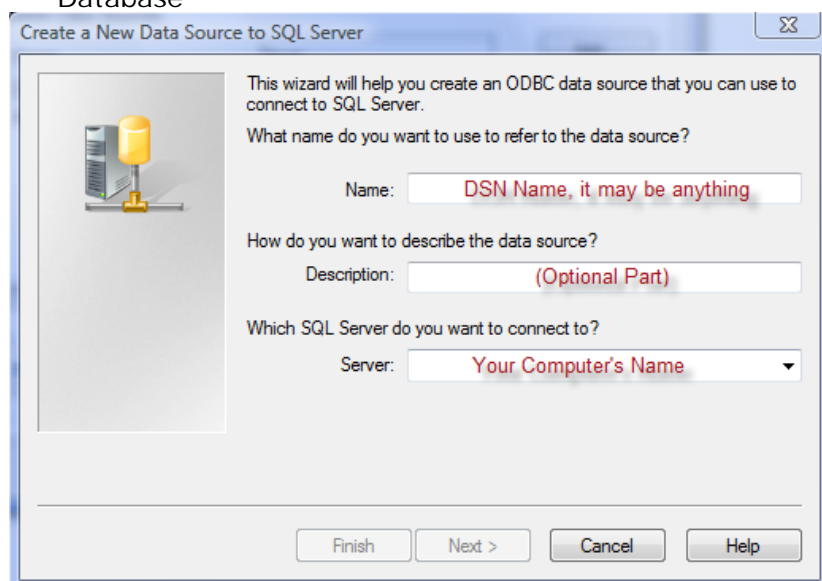
- Click on Create ODBC and Click on User DSN and Click on Add



- Select SQL Server and Click Finish

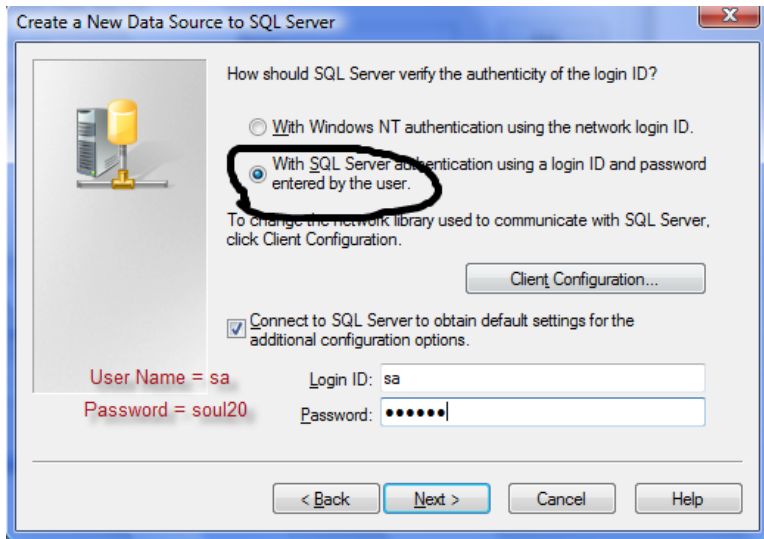


- Enter the following value:
 - Name: Enter any Name without Spaces, Special Characters like !, @, # etc.
 - Description: This field is optional. Either keep it blank or type any remarks to remember
 - Server : Type that Computer's Full Name in which SOUL 2.0 Database

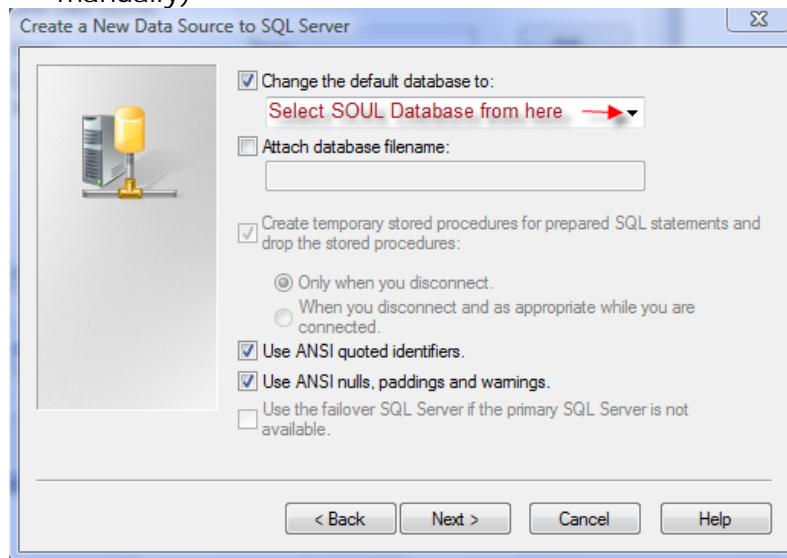


- Click 'Next'

- In 'How should SQL Server verify the authenticity of the login ID?' select the 'With SQL Server Authentication....' option.



- Click 'Next'
- Give the following credentials.
 - Login ID : sa
 - Password : SQL Password (If the step named 'Install Database Engine' has been performed from the SOUL 2.0 CD and no changes has been made to password manually in SQL than default SQL Password is 'soul20' otherwise provide the password changed manually)



- Click 'Next'
- Click 'Finish'
- Click 'Test Data Source'
- Click 'OK'
- Click 'OK'
- Click 'OK'