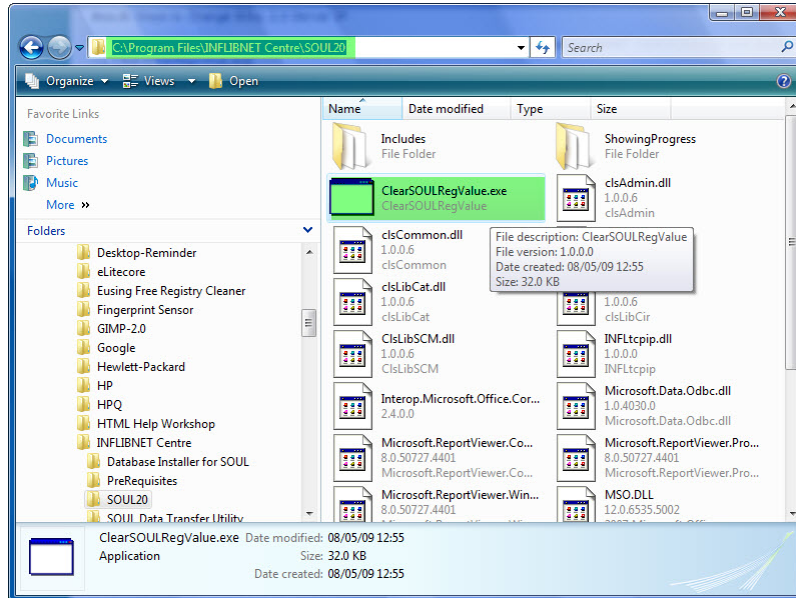
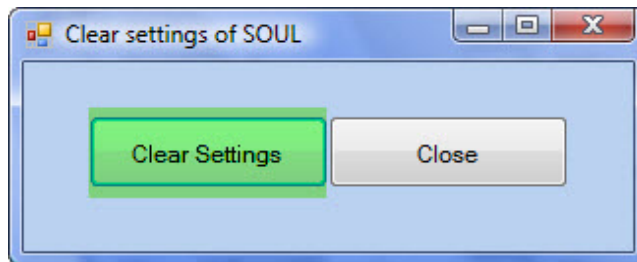


**1. SOUL Server could not be connected error?  
OR  
SOUL 2.0 Server IP needs to be changed**

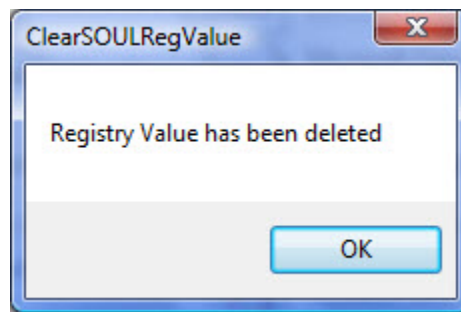
- Go to Path : C:\program files\INFLIBNET Centre\SOUL20LE or C:\program files\INFLIBNET Centre\SOUL20 and double-click the ClearSOULRegValue.exe



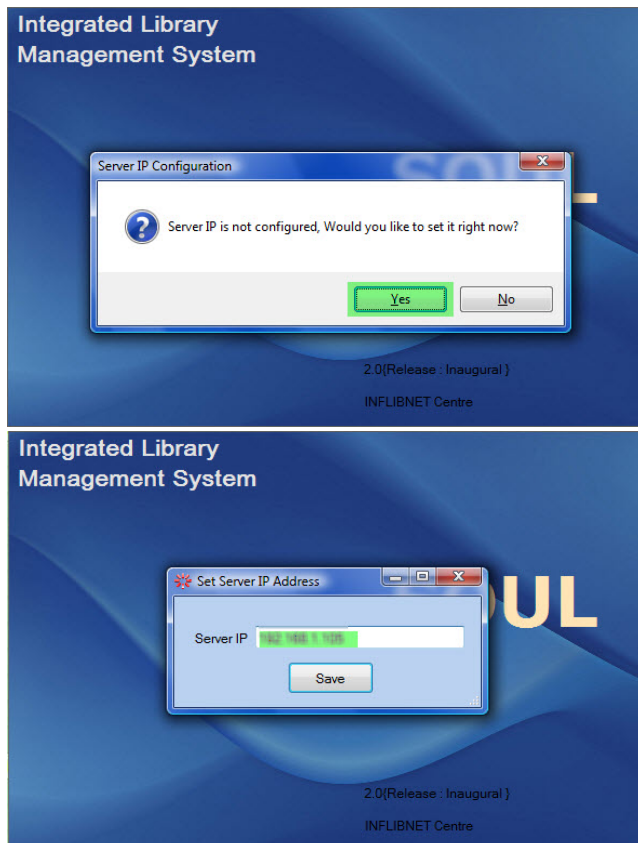
- Click on 'Clear Settings.'



- Make sure SOUL 2.0 Server is running and if computer is in network then Server Computer and Client Computers are properly connected.



- Open the SOUL 2.0 Application, and set the Server IP again.



- Note : If computer is Stand-Alone ie. computer is not in the network with any other computer and is also not connected to internet then provide the IP as 127.0.0.1